

# Valley Times

COOKS RIVER

Vol. 2.  
No. 3.

Friday, January 28, 1994.

A TORCH PUBLICATION

## A wealth of experience

Established in mid-1993, Baseline Constructions is a construction and development company based at 400 Burwood Road, Belmore.

Backed by a wealth of experience, the company caters for the needs of the local residents and developers specialising in residential and commercial ventures.

Nicholas Bettar, founder of the company and a holder of a civil engineering degree, has just completed two residential projects. In addition successful tendering and negotiating with new clients has given Baseline Constructions a firm workload throughout 1994.

These contracts will

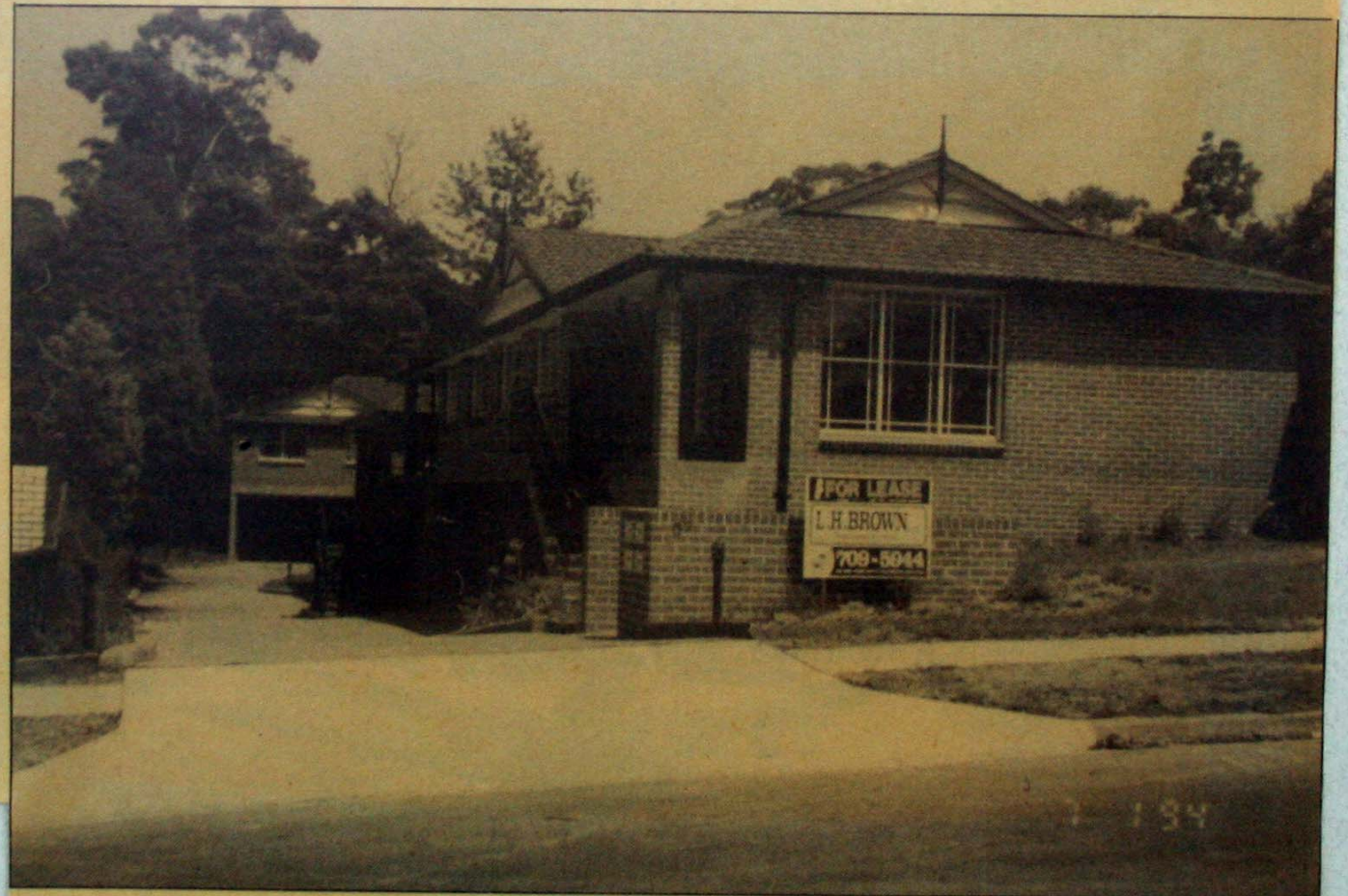
serve to give Baseline a strong standing to continue to grow effectively and solidly and will surpass the company's goal of a turnover of \$1.5 million throughout 1994.

Mr Bettar has gained valuable experience during his employment at Walker Civil Engineering and Infinity Constructions.

Throughout a project, Baseline Constructions ensures that it will be completed on time and to the client's satisfaction.

Telephone Baseline Constructions on 750 2333.

The friendly staff will be happy to discuss any enquires regarding construction and development of homes.



One of the building projects undertaken by Baseline Constructions.